



The world's leading portfolio of official paper charts

The range includes:

Standard Nautical Charts – the world's most recognised, trusted and widely used official charts

Maritime Security Charts – a key voyage-planning tool with the latest security-critical information

Mariners' Routeing Guides – clear overviews of restricted sea room in some of the world's busiest and most complex shipping areas

Port Approach Guides – large scale charts covering ports, containing additional port information to aid approach planning

Routeing Charts – provides shipping routes and distances between major ports, including important information on seasonal changes

Planning Charts – a range of small-scale charts offering high-level overviews of oceans and major ports



United Kingdom
Hydrographic Office

Why ADMIRALTY paper charts

A constant source of information you can trust – today our cartographers continue to set the global standard of dependable chart coverage where you need it.

As an integral part of the portfolio, our extensive range of planning charts are designed to work alongside official navigational charts, whether SNCs or ENC's, to help improve situational awareness on the bridge.

Recognised quality worldwide:

By delivering accuracy and dependability for over 200 years, we have built a hard-earned reputation of trust and respect among the maritime industry.

With our primary aim of saving and protecting lives at sea, our strict quality control has made our paper charts so popular that they are now instantly recognisable on bridges of most ships trading internationally.

Most navigators on the seas today have been trained using ADMIRALTY paper charts, and this familiarity gives further reassurance and confidence on the bridge.

Worldwide coverage

We provide the most comprehensive, official paper chart coverage of the world's commercial shipping routes and main ports.

As shipping activity and port development increases, the need for accurate, up-to-date navigational information is even more important than ever before. The UKHO is committed to updating and extending our full product range as we respond to these emerging trade patterns, ensuring new and developing shipping activity is carried out safely and with confidence.

Right scales to meet mariners' needs

ADMIRALTY charts are produced in a range of scales, and designed for a particular purpose, whether it is passage planning, ocean crossings, coastal navigation or entering port. The mariner should always use the largest scale chart appropriate for their purpose.

Weekly updates and new editions

ADMIRALTY Notices to Mariners (NMs) ensure ADMIRALTY charts are maintained and up-to-date with the latest safety-critical navigational information.

We're constantly receiving, assessing and processing new information to update our charts, with a special focus on buoys, shipwrecks, traffic separation and other safety-related features.

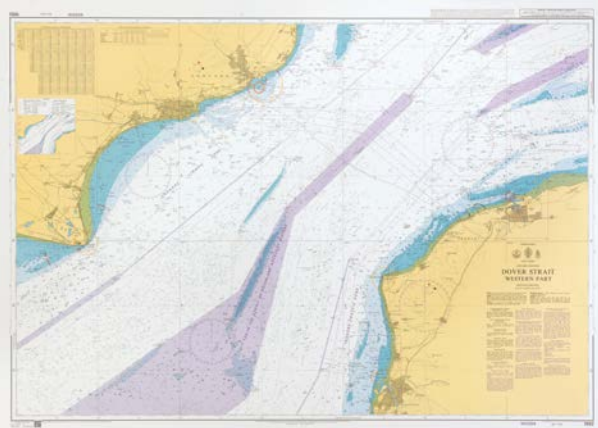
The weekly NMs can be downloaded for free from our website, or the paper bulletin can be bought from your ADMIRALTY chart agent.

Other paper charts available

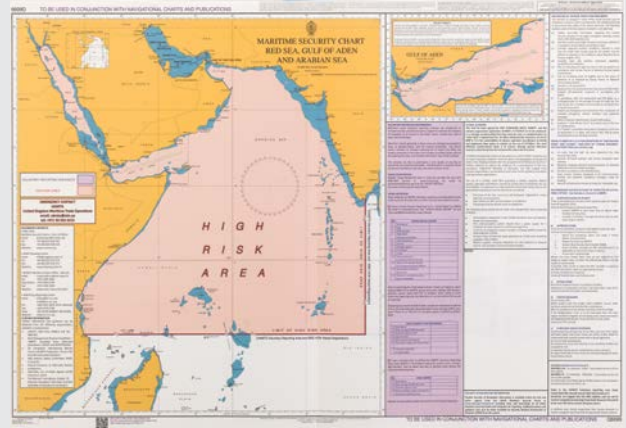
World Time Zone Charts, Load Line Regulations, Gnomonic Charts, Magnetic Variation Charts, Ocean Plotting Sheets etc.

Quick Response (QR) codes

QR codes are located on many ADMIRALTY paper charts so you can quickly check whether individual charts have the latest NMs correctly applied. Scan the code and the link will take you to the online NMs for that chart.



ADMIRALTY Standard Nautical Charts
1892 covering the Western part of the Dover Strait.



Maritime Security Charts
Q6099 covers the Red Sea, Gulf of Aden and Arabian Sea.

Standard Nautical Charts (SNCs)

Over 3,500 ADMIRALTY Charts – the most comprehensive official global paper series delivering quality and integrity for over 200 years.

Coverage

To ensure that mariners have the most dependable coverage for major routes and ports, the UKHO works closely with international hydrographic offices to include up-to-date port developments and changing trading patterns.

Navigation or back-up

All ADMIRALTY SNCs comply with SOLAS regulations, and can be used for navigation on the majority of ships sailing the world's oceans.

Whichever official charts you plan to use, check that the appropriate State Authorities agree beforehand.

Maritime Security Charts

Aid to planning safe passages

This range of security charts help mariners to plan the safest possible passages, keeping ships, crew and cargo safe.

Mariners can view and add this additional level of security-related information by chart.

Risks to maritime security

Information that represents a danger to the security of navigation includes piracy, terrorism, embargoes, mine warfare, exclusion zones, blockades and illegal fishing.

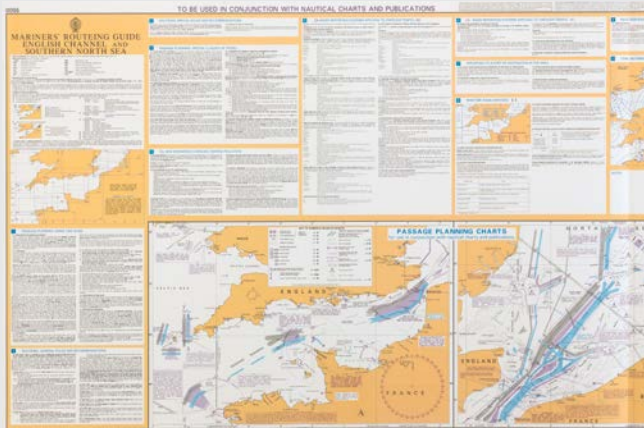
Additional information includes:

General security advice, self protective measures, security procedures and regional contacts, as well as routeing and reporting requirements implemented by military or security forces.

Official, validated government information

Chart information is gathered by the UKHO through our work with NATO and other government organisations, ensuring the most accurate, up-to-date, official and verified information is available.

The latest maritime safety information can be accessed online via the ADMIRALTY website, at no extra charge.



Mariners' Routing Guides
5500 covers the busy English Channel and Southern North Sea.



Port Approach Guides
8002 shows additional, valuable information on a single, larger scale chart for the Port of Southampton.

Mariners' Routing Guides

Additional information to help mariners navigate safely through some of the world's busiest and most complex shipping areas.

Greater awareness in restricted sea room

When planning to navigate through areas of restricted passage, whether restricted because of dense traffic, dangers or warnings to navigation, limited depths or unfavourable meteorological conditions, verified additional information can increase situational awareness on the bridge, and aid the safety of navigation.

Used alongside official navigational charts, these easy-reference guides can reduce the risk of pollution or damage caused by collisions or groundings.

Coverage

Providing guidance through traffic separation schemes and routing measures that have been adopted by the IMO and national authorities.

The expanding range covers the Malacca and Singapore Straits, English Channel and Southern North Sea, Baltic Sea and the Gulf of Suez.

Port Approach Guides

ADMIRALTY Port Approach Guides are single, port-scale charts that contain a wide range of extra planning information for some of the world's busiest approaches.

Quick reference

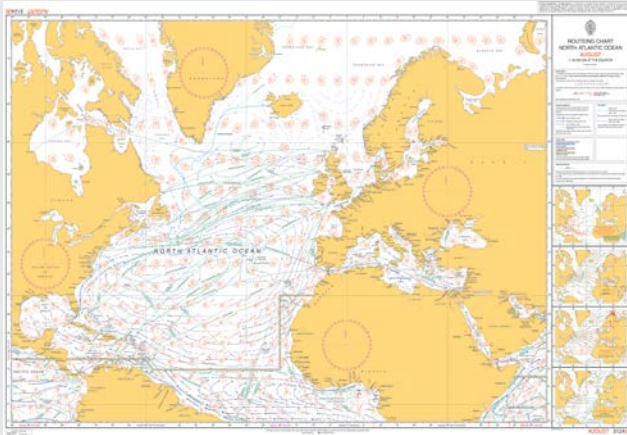
Linking the International Code of Signals (ICS) flags with related reference sections on the chart helps mariners quickly find information they need.

Easy to use

Designed to be used alongside either official paper or digital nautical charts, they help to make the planning of port entry and exit quicker and easier, and aid the berth to berth planning process.

Extra information to aid planning

Additional planning information may include general information including contact details and harbour regulations, Vessel Traffic Service (VTS) information, principal lights and landmarks, specific warnings, tide and climate information, anchorages and prohibited areas, dangerous cargo, pilotage, berth Information and port services.



Routeing Charts

5124(8) North Atlantic for the month of August, showing the navigationally-challenging Caribbean hurricane season.



Planning Charts

4016 covers the Eastern Atlantic Ocean to Western Pacific Ocean, including the Mediterranean Sea and Indian Ocean.

Routeing Charts

Detailing expected weather and ocean conditions to help plan passages for any time of the year.

Coverage

For high-level route planning – small-scale charts cover the oceans of the world; North Atlantic, South Atlantic, North Pacific, South Pacific and Indian Ocean.

For areas of dense traffic a range of larger scale Routeing Charts gives greater detail; including currents information in a grid layout, and additional meteorological information.

A chart for each month of the year

To cover weather conditions that change throughout the year, each region has 12 separate charts.

Specific information includes:

Positions of major ports, and recognised shipping routes and distances between them

- › Wind roses showing wind speed and direction
- › Frequency and intensity of storms and low visibility
- › Sea and air temperature, air pressure and ice limits
- › Ocean currents
- › Limits of loadline zones
- › Locations of ocean weather ships

Planning Charts

A high-level overview of the world, oceans and major ports.

Small scale overviews

This series of ADMIRALTY Planning Charts are available at very small scales covering ocean regions and the world.

Major ports

Ideal for 'port-to-port' planning, they show the most significant ports throughout each region.

Series includes:

Chart No.	Planning Chart title	Natural Scale 1:
4000	The World	45,000,000
4001	Atlantic and Indian Oceans	27,000,000
4002	Pacific Ocean	27,000,000
4003	South Atlantic Ocean	20,000,000
4004	North Atlantic Ocean and Mediterranean Sea	20,000,000
4005	Indian Ocean	20,000,000
4006	Arctic Region	7,500,000
4007	South Pacific Ocean	20,000,000
4008	North Pacific Ocean	20,000,000
4009	Antarctic Region	15,000,000
4015	Atlantic Ocean	20,000,000
4016	Eastern Atlantic Ocean to Western Pacific Ocean including the Mediterranean Sea and Indian Ocean	20,000,000

Instantly recognisable on bridges of ships trading internationally, and which have been trusted and relied on for over 200 years.



About us

The United Kingdom Hydrographic Office is a leading provider of global marine geospatial data.

We help to inform maritime decision-making for navigation, infrastructure development and the management of marine resources.

Serving users worldwide

Our world-leading location based information is available through ADMIRALTY Maritime Data Solutions to users worldwide.

For more information, contact our global network of ADMIRALTY Chart Agents. Alternatively, contact our customer service team.




United Kingdom Hydrographic Office

Admiralty Way, Taunton, Somerset
TA1 2DN, United Kingdom
Telephone +44 (0)1823 484444
customerservices@ukho.gov.uk
gov.uk/ukho

Find out more about our market-leading
ADMIRALTY Maritime Data Solutions:

admiralty.co.uk    

ADMIRALTY and  are trademarks of the Secretary of State for Defence

42479 17.10.V04.EN © Crown Copyright 2017. All rights reserved. Correct at the time of publishing.

COMPANY WITH
QUALITY SYSTEM
CERTIFIED BY DNV GL
= ISO 9001 =



013